

# O Jesu mi dulcissime

## Symphoniae Sacrae liber secundus (1615)

### Cantus I

Giovanni Gabrieli (1554/7 – 1612)

4

O Jesu mi dul-cis-si - me ad - o-ro te in sta-bu-

13

lo, o Jesu mi dul-cis-si - me ad - o-ro te, ad -

23

- o-ro te in sta-bu - lo com - mo - ran -

31

8 8 4

tem. O Chri - ste, o Chri - ste

60

rex pi-is - si - me, rex pi-is - si - me

68

ad - o-ramus te, ad - o-ramus te in fae - no cu-ban -

75

8

tem, in coe lo ful-gen tem, in coe lo ful - gen - tem. o

90

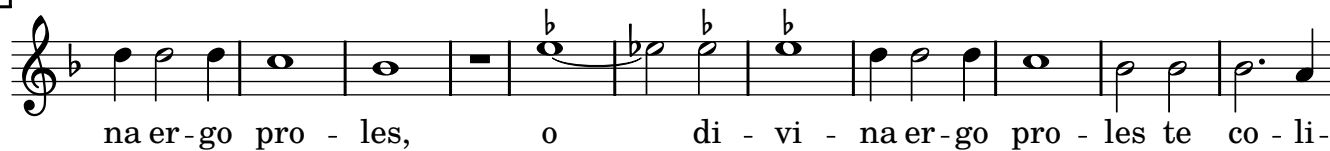
#

sin-gu - la - ris ca - ri - tas, Chri - stus

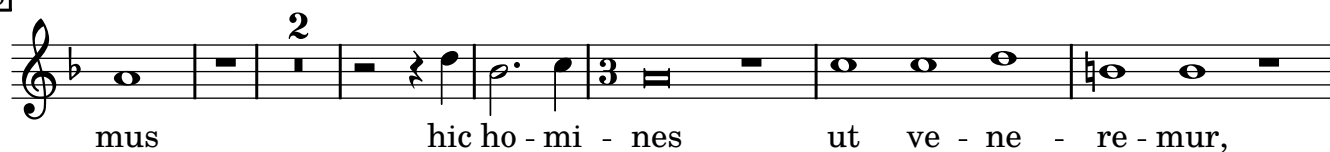
[99]



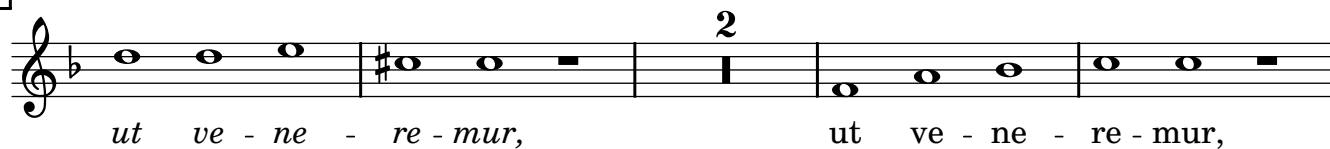
[117]



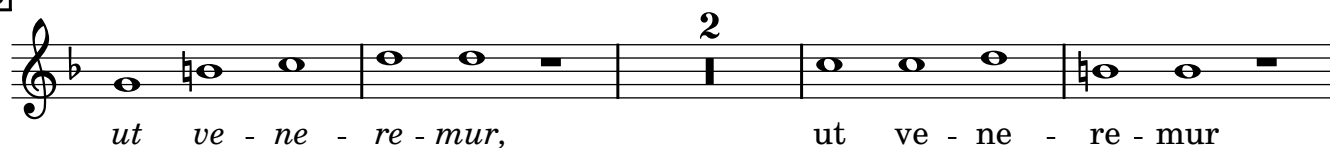
[128]



[137]



[143]



[149]



[154]



[159]



# O Jesu mi dulcissime

## Symphoniae Sacrae liber secundus (1615)

Altus I

Giovanni Gabrieli (1554/7 – 1612)



[12]



[22]



[32]



[62]



[70]



[78]



[95]



[112]



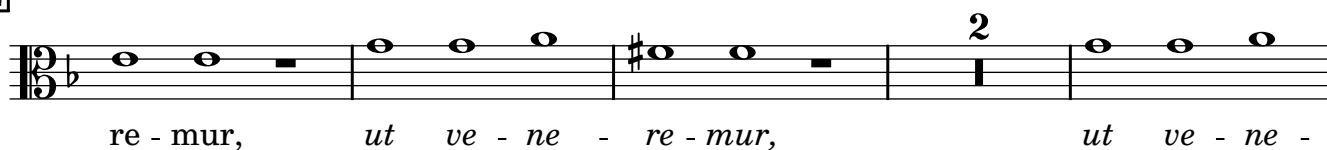
[125]



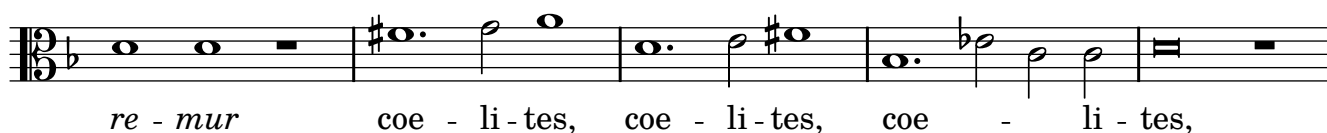
[136]



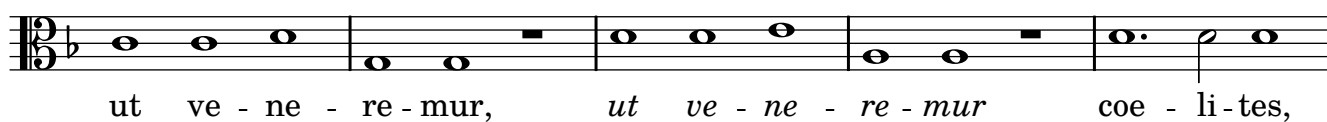
[142]



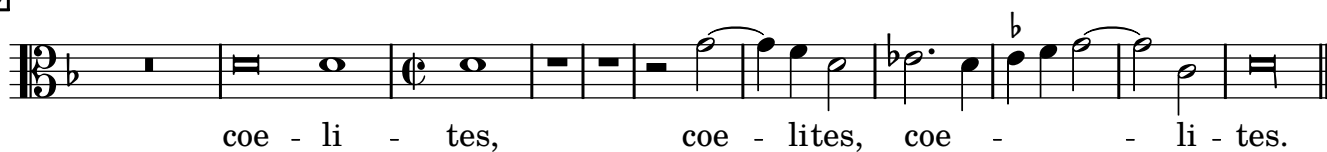
[148]



[153]



[158]



# O Jesu mi dulcissime

## Symphoniae Sacrae liber secundus (1615)

Tenor I

Giovanni Gabrieli (1554/7 – 1612)



[9]



[17]



[27]



[56]



[67]



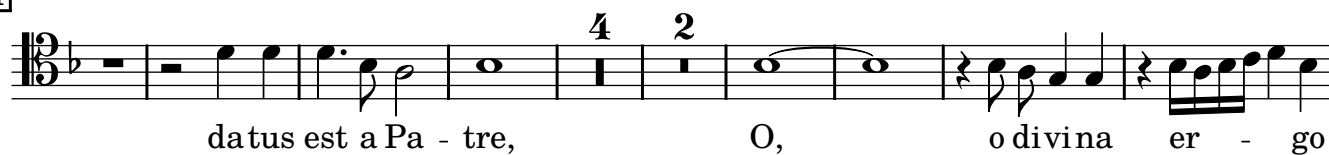
[75]



[91]



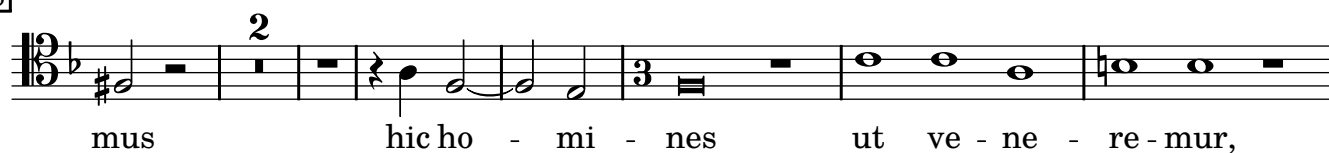
[104]



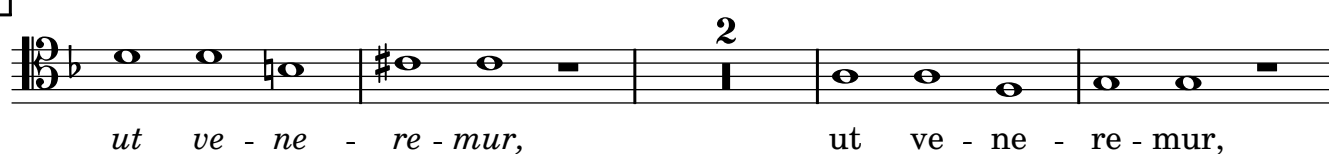
[118]



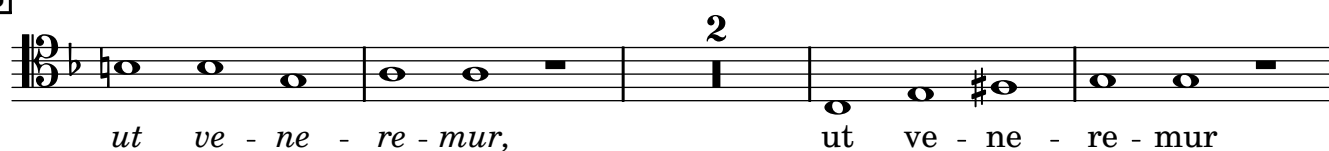
[128]



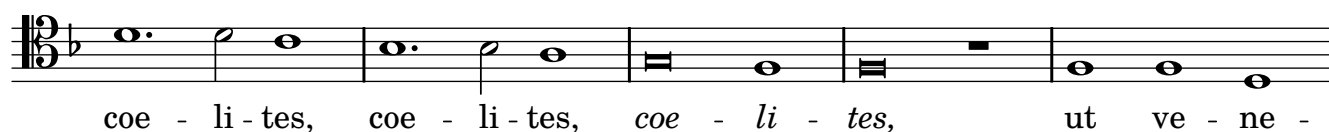
[137]



[143]



[149]



[154]



[159]



# O Jesu mi dulcissime

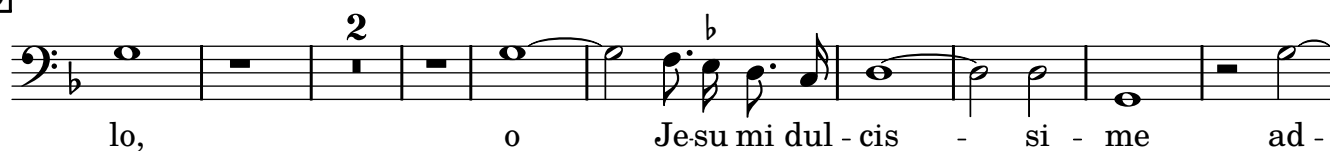
## Symphoniae Sacrae liber secundus (1615)

Bassus I

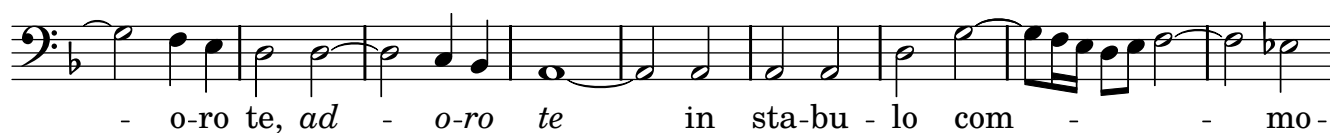
Giovanni Gabrieli (1554/7 – 1612)



[9]



[20]



[29]



[58]



[67]



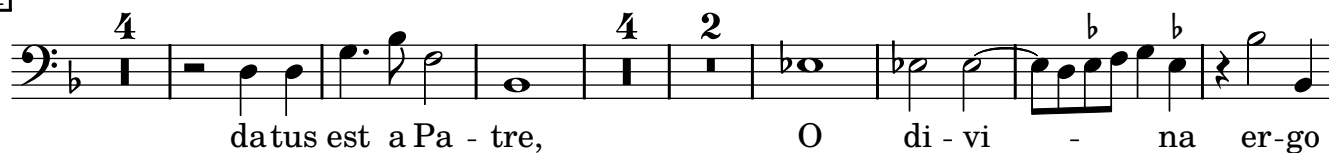
[75]



[91]



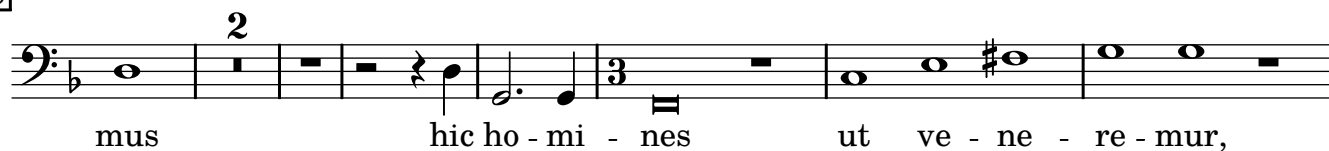
[101]



[118]



[128]



[137]



[143]



[149]



[154]



[159]



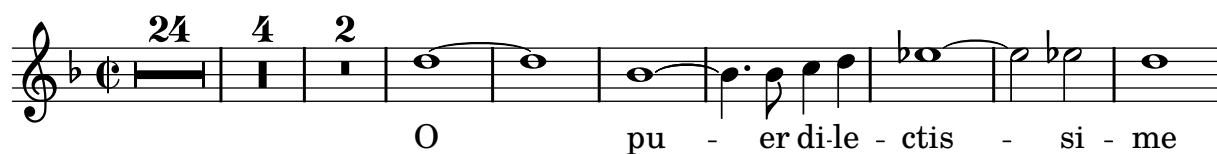


# O Jesu mi dulcissime

## Symphoniae Sacrae liber secundus (1615)

### Cantus II

Giovanni Gabrieli (1554/7 – 1612)



[38]



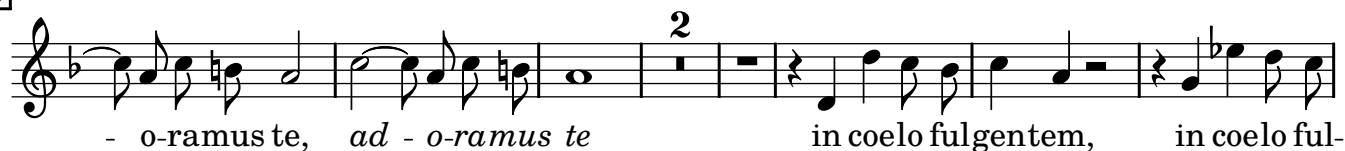
[47]



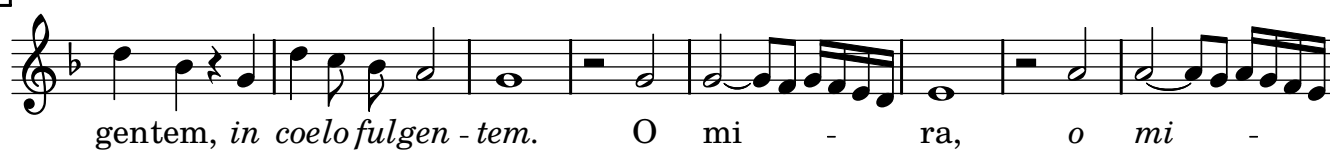
[55]



[69]



[78]



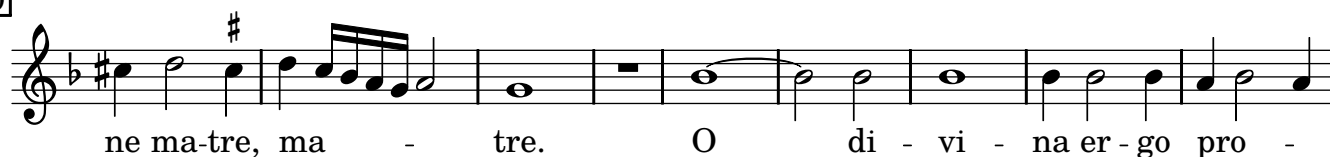
[86]



[101]



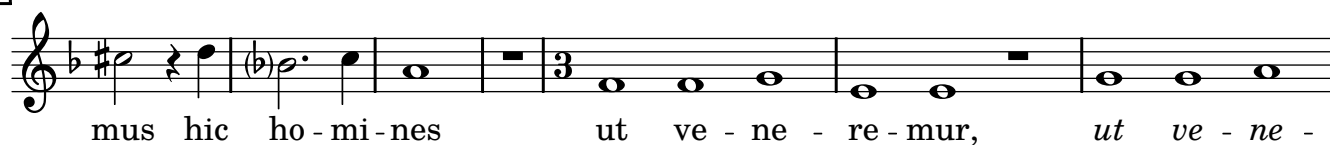
[110]



[119]



[130]



[137]



[142]



[147]



[153]



[158]



# O Jesu mi dulcissime

## Symphoniae Sacrae liber secundus (1615)

Altus II

Giovanni Gabrieli (1554/7 – 1612)



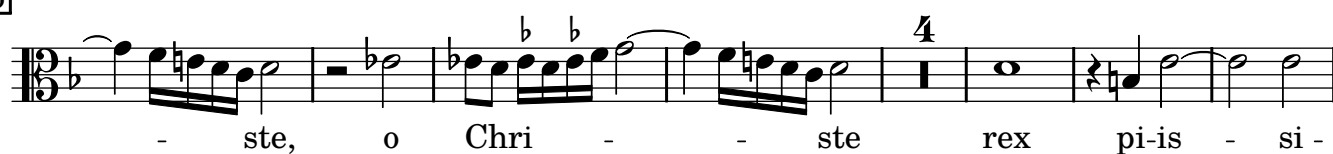
39



48



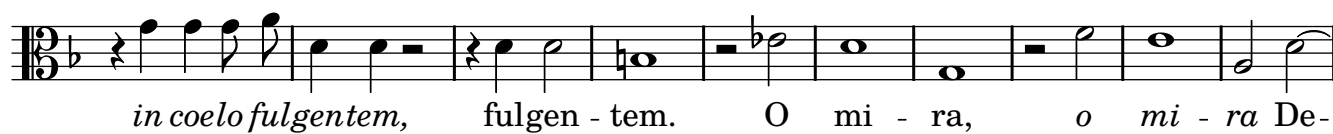
56



67



77



87



103



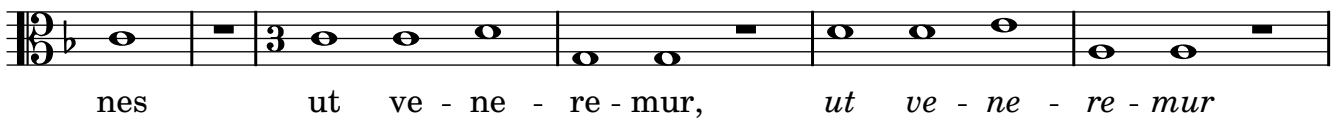
111



122



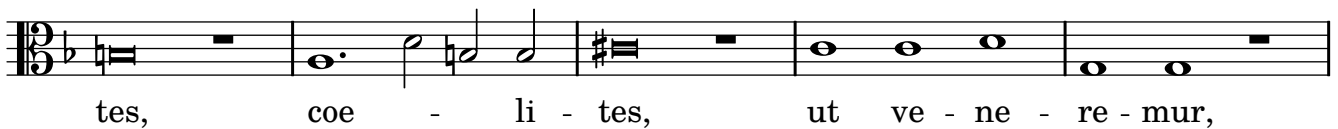
132



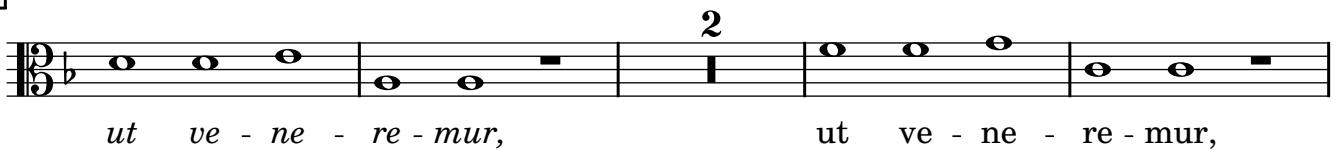
138



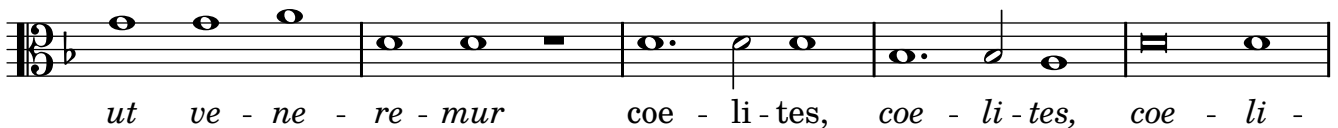
143



148



154



159

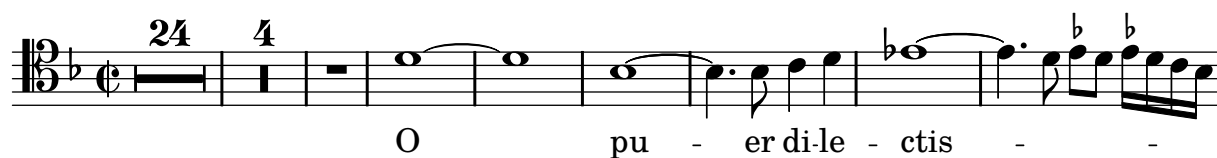


# O Jesu mi dulcissime

## Symphoniae Sacrae liber secundus (1615)

Tenor II

Giovanni Gabrieli (1554/7 – 1612)



[36]



[45]



[54]



[66]



[76]



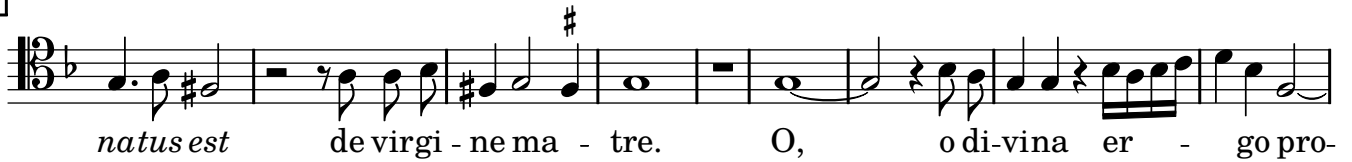
[84]



[98]



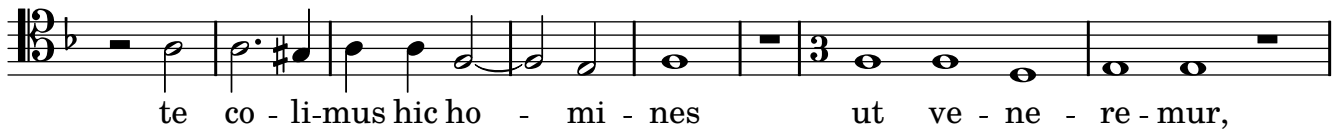
109



118



128



136



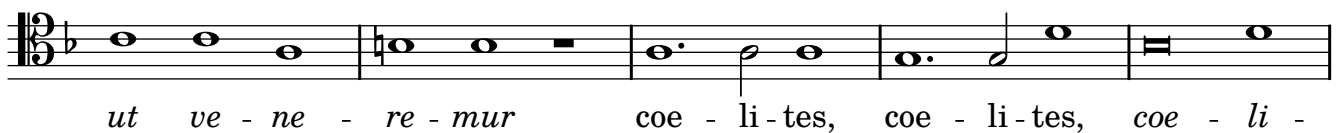
142



148



154



159



# O Jesu mi dulcissime

## Symphoniae Sacrae liber secundus (1615)

Bassus II

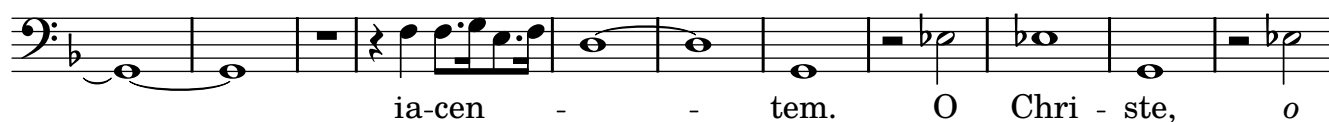
Giovanni Gabrieli (1554/7 – 1612)



[39]



[47]



[58]



[70]



[79]



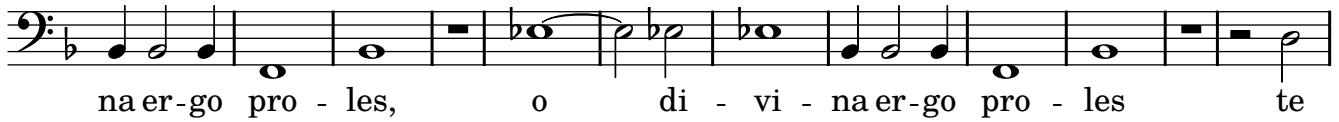
[90]



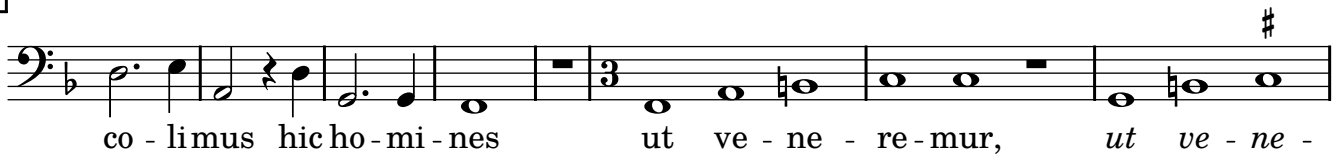
[107]



[117]



[129]



[137]



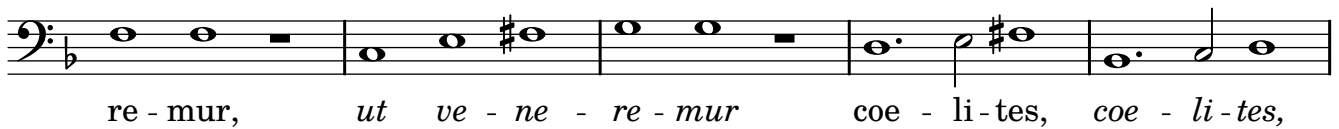
[142]



[147]



[153]



[158]





# O Jesu mi dulcissime

## Symphoniae Sacrae liber secundus (1615)

Bassus pro organo Giovanni Gabrieli (1554/7 – 1612)



12



25



37



47



60



72



82



[illegible][illegible]

The bass line of 'The Rose Tree' is written in G major (one flat) and 2/4 time. It consists of 12 measures. The notes are: G2 (whole), G2-A2 (half), G2 (half), G2-A2-B2 (quarter), G2 (quarter), G2-A2-B2 (quarter), G2 (quarter), G2-A2-B2 (quarter), G2 (quarter), G2-A2-B2 (quarter), G2 (quarter), and G2 (quarter). The melody is a simple, descending line.

Musical notation for the bass line of 'The Rose Tree'. The key signature has one flat (B-flat). The melody consists of the following notes: G2, A2, Bb2, A2, G2, F2, E2, D2, C2, Bb1, A1, G1, F1, E1, D1, C1, Bb0, A0, G0, F0, E0, D0, C0, Bb-1, A-1, G-1, F-1, E-1, D-1, C-1, Bb-2, A-2, G-2, F-2, E-2, D-2, C-2, Bb-3, A-3, G-3, F-3, E-3, D-3, C-3, Bb-4, A-4, G-4, F-4, E-4, D-4, C-4, Bb-5, A-5, G-5, F-5, E-5, D-5, C-5, Bb-6, A-6, G-6, F-6, E-6, D-6, C-6, Bb-7, A-7, G-7, F-7, E-7, D-7, C-7, Bb-8, A-8, G-8, F-8, E-8, D-8, C-8, Bb-9, A-9, G-9, F-9, E-9, D-9, C-9, Bb-10, A-10, G-10, F-10, E-10, D-10, C-10, Bb-11, A-11, G-11, F-11, E-11, D-11, C-11, Bb-12, A-12, G-12, F-12, E-12, D-12, C-12, Bb-13, A-13, G-13, F-13, E-13, D-13, C-13, Bb-14, A-14, G-14, F-14, E-14, D-14, C-14, Bb-15, A-15, G-15, F-15, E-15, D-15, C-15, Bb-16, A-16, G-16, F-16, E-16, D-16, C-16, Bb-17, A-17, G-17, F-17, E-17, D-17, C-17, Bb-18, A-18, G-18, F-18, E-18, D-18, C-18, Bb-19, A-19, G-19, F-19, E-19, D-19, C-19, Bb-20, A-20, G-20, F-20, E-20, D-20, C-20, Bb-21, A-21, G-21, F-21, E-21, D-21, C-21, Bb-22, A-22, G-22, F-22, E-22, D-22, C-22, Bb-23, A-23, G-23, F-23, E-23, D-23, C-23, Bb-24, A-24, G-24, F-24, E-24, D-24, C-24, Bb-25, A-25, G-25, F-25, E-25, D-25, C-25, Bb-26, A-26, G-26, F-26, E-26, D-26, C-26, Bb-27, A-27, G-27, F-27, E-27, D-27, C-27, Bb-28, A-28, G-28, F-28, E-28, D-28, C-28, Bb-29, A-29, G-29, F-29, E-29, D-29, C-29, Bb-30, A-30, G-30, F-30, E-30, D-30, C-30, Bb-31, A-31, G-31, F-31, E-31, D-31, C-31, Bb-32, A-32, G-32, F-32, E-32, D-32, C-32, Bb-33, A-33, G-33, F-33, E-33, D-33, C-33, Bb-34, A-34, G-34, F-34, E-34, D-34, C-34, Bb-35, A-35, G-35, F-35, E-35, D-35, C-35, Bb-36, A-36, G-36, F-36, E-36, D-36, C-36, Bb-37, A-37, G-37, F-37, E-37, D-37, C-37, Bb-38, A-38, G-38, F-38, E-38, D-38, C-38, Bb-39, A-39, G-39, F-39, E-39, D-39, C-39, Bb-40, A-40, G-40, F-40, E-40, D-40, C-40, Bb-41, A-41, G-41, F-41, E-41, D-41, C-41, Bb-42, A-42, G-42, F-42, E-42, D-42, C-42, Bb-43, A-43, G-43, F-43, E-43, D-43, C-43, Bb-44, A-44, G-44, F-44, E-44, D-44, C-44, Bb-45, A-45, G-45, F-45, E-45, D-45, C-45, Bb-46, A-46, G-46, F-46, E-46, D-46, C-46, Bb-47, A-47, G-47, F-47, E-47, D-47, C-47, Bb-48, A-48, G-48, F-48, E-48, D-48, C-48, Bb-49, A-49, G-49, F-49, E-49, D-49, C-49, Bb-50, A-50, G-50, F-50, E-50, D-50, C-50, Bb-51, A-51, G-51, F-51, E-51, D-51, C-51, Bb-52, A-52, G-52, F-52, E-52, D-52, C-52, Bb-53, A-53, G-53, F-53, E-53, D-53, C-53, Bb-54, A-54, G-54, F-54, E-54, D-54, C-54, Bb-55, A-55, G-55, F-55, E-55, D-55, C-55, Bb-56, A-56, G-56, F-56, E-56, D-56, C-56, Bb-57, A-57, G-57, F-57, E-57, D-57, C-57, Bb-58, A-58, G-58, F-58, E-58, D-58, C-58, Bb-59, A-59, G-59, F-59, E-59, D-59, C-59, Bb-60, A-60, G-60, F-60, E-60, D-60, C-60, Bb-61, A-61, G-61, F-61, E-61, D-61, C-61, Bb-62, A-62, G-62, F-62, E-62, D-62, C-62, Bb-63, A-63, G-63, F-63, E-63, D-63, C-63, Bb-64, A-64, G-64, F-64, E-64, D-64, C-64, Bb-65, A-65, G-65, F-65, E-65, D-65, C-65, Bb-66, A-66, G-66, F-66, E-66, D-66, C-66, Bb-67, A-67, G-67, F-67, E-67, D-67, C-67, Bb-68, A-68, G-68, F-68, E-68, D-68, C-68, Bb-69, A-69, G-69, F-69, E-69, D-69, C-69, Bb-70, A-70, G-70, F-70, E-70, D-70, C-70, Bb-71, A-71, G-71, F-71, E-71, D-71, C-71, Bb-72, A-72, G-72, F-72, E-72, D-72, C-72, Bb-73, A-73, G-73, F-73, E-73, D-73, C-73, Bb-74, A-74, G-74, F-74, E-74, D-74, C-74, Bb-75, A-75, G-75, F-75, E-75, D-75, C-75, Bb-76, A-76, G-76, F-76, E-76, D-76, C-76, Bb-77, A-77, G-77, F-77, E-77, D-77, C-77, Bb-78, A-78, G-78, F-78, E-78, D-78, C-78, Bb-79, A-79, G-79, F-79, E-79, D-79, C-79, Bb-80, A-80, G-80, F-80, E-80, D-80, C-80, Bb-81, A-81, G-81, F-81, E-81, D-81, C-81, Bb-82, A-82, G-82, F-82, E-82, D-82, C-82, Bb-83, A-83, G-83, F-83, E-83, D-83, C-83, Bb-84, A-84, G-84, F-84, E-84, D-84, C-84, Bb-85, A-85, G-85, F-85, E-85, D-85, C-85, Bb-86, A-86, G-86, F-86, E-86, D-86, C-86, Bb-87, A-87, G-87, F-87, E-87, D-87, C-87, Bb-88, A-88, G-88, F-88, E-88, D-88, C-88, Bb-89, A-89, G-89, F-89, E-89, D-89, C-89, Bb-90, A-90, G-90, F-90, E-90, D-90, C-90, Bb-91, A-91, G-91, F-91, E-91, D-91, C-91, Bb-92, A-92, G-92, F-92, E-92, D-92, C-92, Bb-93, A-93, G-93, F-93, E-93, D-93, C-93, Bb-94, A-94, G-94, F-94, E-94, D-94, C-94, Bb-95, A-95, G-95, F-95, E-95, D-95, C-95, Bb-96, A-96, G-96, F-96, E-96, D-96, C-96, Bb-97, A-97, G-97, F-97, E-97, D-97, C-97, Bb-98, A-98, G-98, F-98, E-98, D-98, C-98, Bb-99, A-99, G-99, F-99, E-99, D-99, C-99, Bb-100, A-100, G-100, F-100, E-100, D-100, C-100, Bb-101, A-101, G-101, F-101, E-101, D-101, C-101, Bb-102, A-102, G-102, F-102, E-102, D-102, C-102, Bb-103, A-103, G-103, F-103, E-103, D-103, C-103, Bb-104, A-104, G-104, F-104, E-104, D-104, C-104, Bb-105, A-105, G-105, F-105, E-105, D-105, C-105, Bb-106, A-106, G-106, F-106, E-106, D-106, C-106, Bb-107, A-107, G-107, F-107, E-107, D-107, C-107, Bb-108, A-108, G-108, F-108, E-108, D-108, C-108, Bb-109, A-109, G-109, F-109, E-109, D-109, C-109, Bb-110, A-110, G-110, F-110, E-110, D-110, C-11

Musical notation for the bass line of 'The Rose Tree'. The key signature has one flat (B-flat). The melody consists of six measures: 1. Quarter note G2, quarter note A2, quarter note B2, quarter note C3. 2. Quarter note B2, quarter note A2, quarter note G2, quarter note F2. 3. Quarter note E2, quarter note D2, quarter note C2, quarter note B1. 4. Quarter note A1, quarter note G1, quarter note F1, quarter note E1. 5. Quarter note D1, quarter note C1, quarter note B0, quarter note A0. 6. Quarter note G0, quarter note F0, quarter note E0, quarter note D0. The piece ends with a double bar line.

[illegible]

The bass line of 'The Rose Tree' is written on a single staff in bass clef with a key signature of one flat (B-flat). The melody consists of six measures. The notes are: G2 (half note), A2 (quarter note), B2 (quarter note), G2 (half note), F2 (quarter note), E2 (quarter note), D2 (half note), C2 (quarter note), B1 (quarter note), A1 (quarter note), G1 (half note), F1 (quarter note), E1 (quarter note), D1 (half note), C1 (quarter note), B0 (quarter note). The melody is simple and follows a descending stepwise pattern.

[illegible]